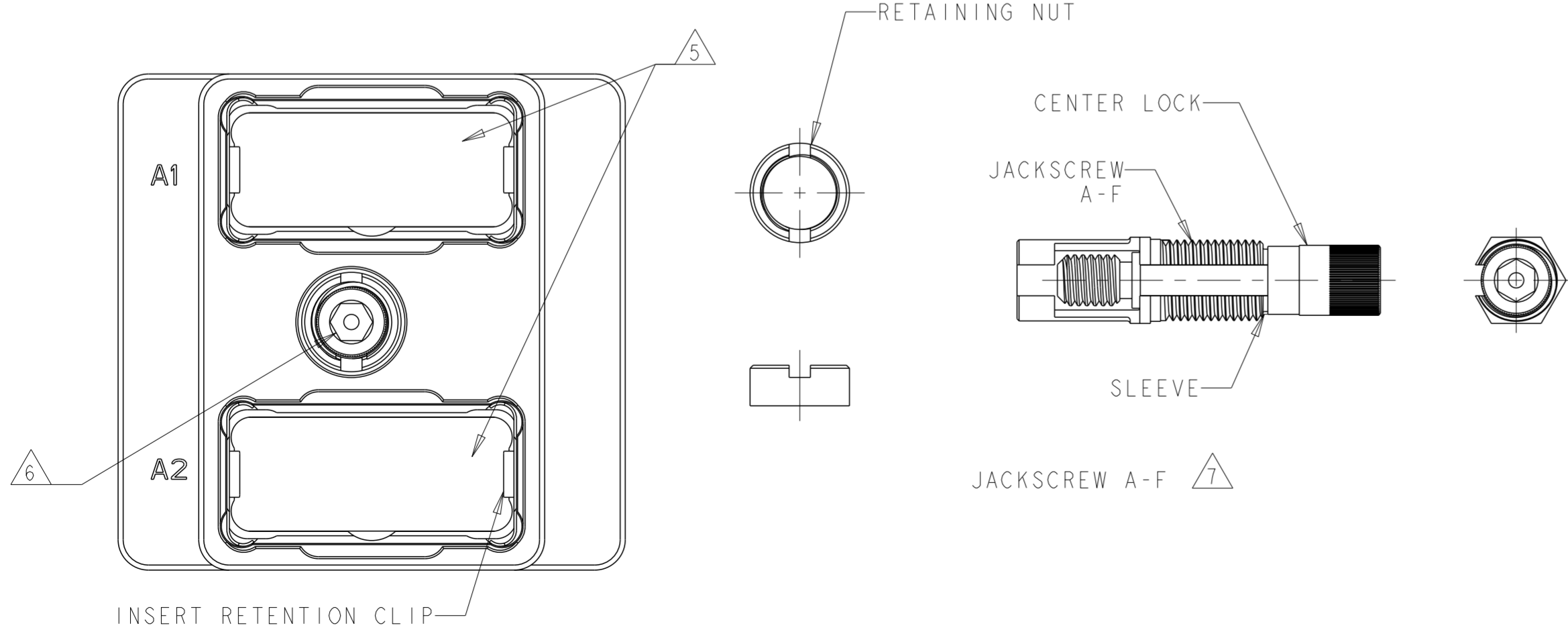
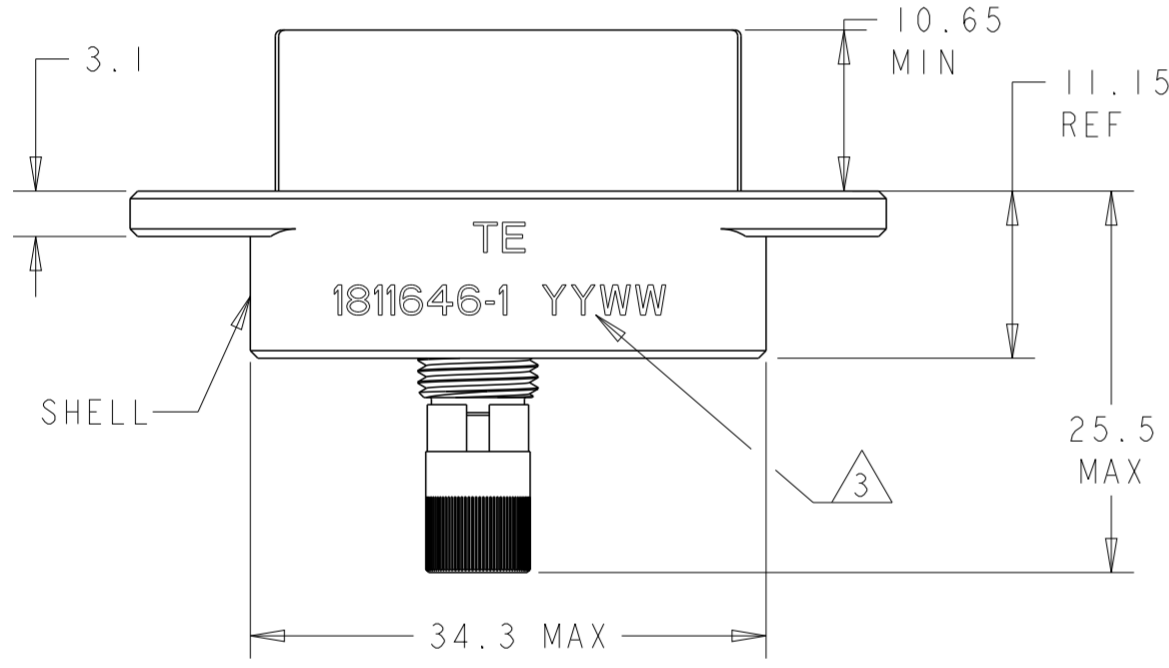
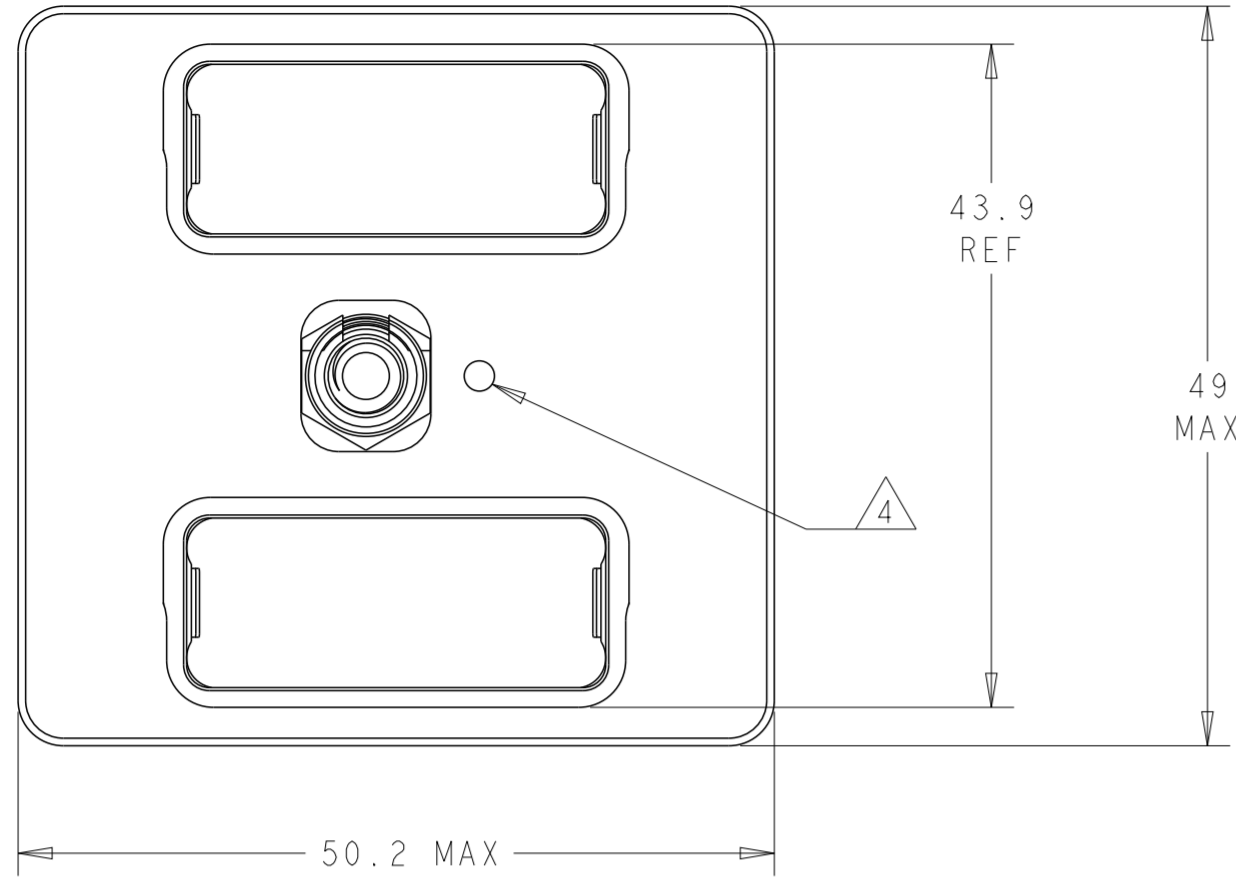


THIS DRAWING IS UNPUBLISHED. RELEASED FOR PUBLICATION 20  
 © COPYRIGHT 20 BY - ALL RIGHTS RESERVED.

REVISIONS				
P	LTR	DESCRIPTION	DATE	APVD
D		REVISED PER ECO-14-016549	17NOV14	MGM CT



- ① SHELL: ALUMINUM ALLOY 6061 T651  
 INSERT RETENTION CLIP & JACKSCREW SLEEVE: COPPER ALLOY PER ASTM B194  
 JACKSCREW KEY, CENTER LOCK, & RETAINING NUT: STAINLESS STEEL PER AISI 316
- ② SHELL: ELECTROLESS NICKEL PER SAE AMS-C-26074, CLASS 1
- ③ DATE CODE - YEAR & WEEK (YY WW)
- ④ INDEXING POINT FOR POLARIZATION
- ⑤ SHELL CAVITIES FOR GPRB SERIES INSERTS WITH KEYING CODE A
- ⑥ HEX KEY SLOT FOR 9/64 ALLEN WRENCH
- ⑦ THE JACKSCREW & RETAINING NUT ARE PRE-ASSEMBLED TO THE SHELL.  
 THESE ARE SHOWN UNASSEMBLED FOR CLARITY.

1811646-1  
 PART NUMBER

THIS DRAWING IS A CONTROLLED DOCUMENT.		DWN BW	10AUG05	TE Connectivity
DIMENSIONS: mm		CHK JPM	10AUG05	
TOLERANCES UNLESS OTHERWISE SPECIFIED:		APVD JPM	10AUG05	NAME PLUG SHELL ASSEMBLY, VERTICAL, GPRB2
0 PLC ±0.2		PRODUCT SPEC		SIZE
1 PLC ±0.2		APPLICATION SPEC		CAGE CODE
2 PLC ±0.2				DRAWING NO
3 PLC ±				RESTRICTED TO
4 PLC ±				A200779
ANGLES ±		WEIGHT		C-1811646
FINISH		CUSTOMER DRAWING	SCALE 2:1	SHEET 1 OF 1
①				REV D
②				