

- 1
- 2
- 3
- 4
- 5
- 6
- 7
- 8
- 9
- 10
- 11
- 12
- 13
- 14
- 15
- 16
- 17
- 18

**MATERIAL**

Matte anodised aluminium.

**MOUNTING**

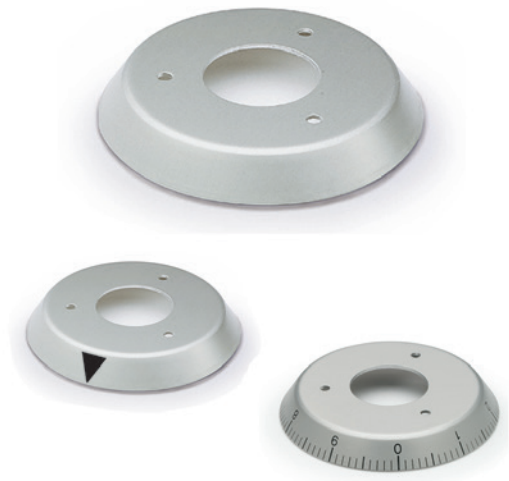
By means of three supplied self-tapping rivets for fitting to control knobs IZN.381 (see page -).

**STANDARD EXECUTIONS**

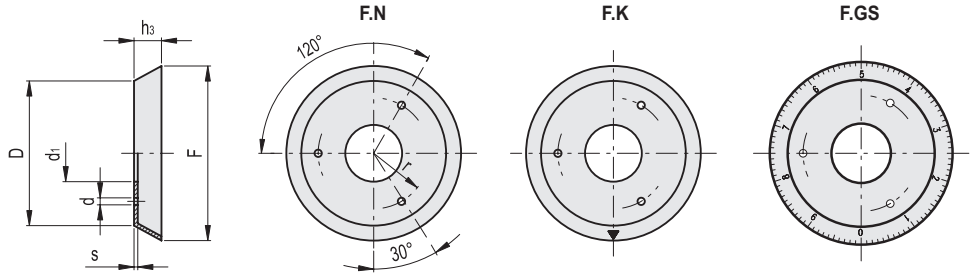
- **F.N**: plain flange.
- **F.K**: flange with triangular black index.
- **F.GS**: flange with black graduation (marks and numbers).
- **F.36 GS e F.40 GS**: 40 marks, numbering 0, 1, 2 .... 9 increases as the knob is turned clockwise.
- **F.45, 50, 56, 63 GS**: 100 marks, numbering 0, 1, 2 .... 9 increases as the knob is turned clockwise.

**SPECIAL EXECUTIONS ON REQUEST**

On the surface of the flanges other kinds of precision graduations can be laser-engraved (see Graduations on page -), numbers, graphic symbols, etc.



Conversion Table	
1 mm = 0,039 inch	
D	
mm	inch
32	1.25
37	1.44
42	1.63
48	1.87
52	2.03
58	2.26
63	2.46



**F.N**

Code	Description	D	F	d	d1	h3	s	r	⚖
29002	F.32 N	32	38	2.1	15	6	0.8	9.5	3
30002	F.36 N	37	45	2.1	15	7	1	12	5
30102	F.40 N	42	50	3	18	7	1	14	7
30202	F.45 N	48	55	2.7	22	7	1	15.8	8
30302	F.50 N	52	63	2.7	22	9	1	18.1	10
30402	F.56 N	58	70	2.7	26	11	1	20.6	12
30452	F.63 N	63	78	2.7	26	13	1	22.7	16

**F.K**

Code	Description	D	F	d	d1	h3	s	r	⚖
30004	F.36 K	37	45	2.1	15	7	1	12	5
30104	F.40 K	42	50	3	18	7	1	14	7
30204	F.45 K	48	55	2.7	22	7	1	15.8	8
30304	F.50 K	52	63	2.7	22	9	1	18.1	10
30404	F.56 K	58	70	2.7	26	11	1	20.6	12
30454	F.63 K	63	78	2.7	26	13	1	22.7	16

**F.GS**

Code	Description	D	F	d	d1	h3	s	r	⚖
30003	F.36 GS-10/40	37	45	2.1	15	7	1	12	5
30103	F.40 GS-10/40	42	50	3	18	7	1	14	7
30203	F.45 GS-10/100	48	55	2.7	22	7	1	15.8	8
30303	F.50 GS-10/100	52	63	2.7	22	9	1	18.1	10
30403	F.56 GS-10/100	58	70	2.7	26	11	1	20.6	12
30453	F.63 GS-10/100	63	78	2.7	26	13	1	22.7	16