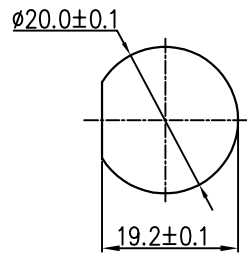
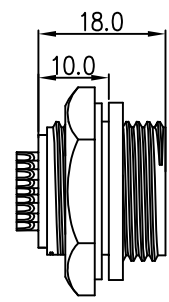


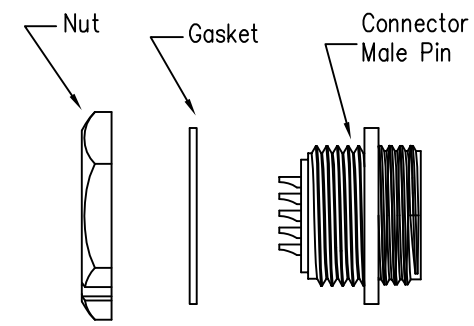
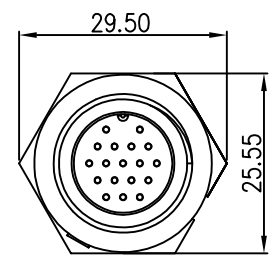
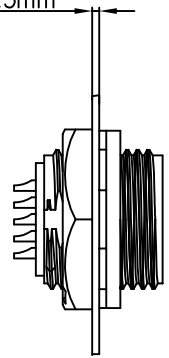
REV.	ECN NO.	DESCRIPTION	SIGN	DATE
C1	N/A	INITIAL DRAWING	Liu	2020/05/16



Recommended Panel Cut-Out

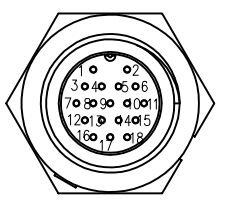


Panel T: Max 3.5mm



23XXX515-03

Pin Number



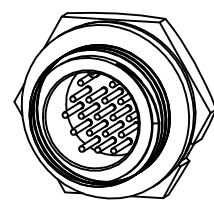
18 Pin

P/N: 23018515-03

Pin Assignments
Front View

Specification:

1. Operation Temperature: $-45^{\circ}\text{C} \sim 105^{\circ}\text{C}$.
2. Insulation Resistance: $100\text{M}\Omega$ at DC500V.
3. Contact Resistance: $<10\text{m}\Omega$.
4. Withstand Voltage: 1000V AC
5. Operating Current: 2A
6. Operating Voltage: DC 30V
7. Waterproof Rate: IP67 (Mated)
8. Housing: Nylon, Black
9. Male Pin: Copper Alloy, Gold Plated
10. Gasket: Silicon Gray
11. Panel Nut: Nylon, Black
12. Torque Rate: $0.8 \sim 1.0\text{N} \cdot \text{m}$
13. RoHS Compliant.
14. Mating Cap P/N: 806-00021-00



CHOGORI

UNIT: mm TOLERANCE .X ± 0.25 .XX ± 0.15 .XXX ± 0.05 ANGLES $\pm 1^{\circ}$	DESCRIPTION Middle Series Screw Type Rear Mount With Male Pin		CHOGORI	PART NO	23018515-03	DRAWN BY	Liu	DATE	2020/05/16		
	SCALE	1:1		SHEET	1 OF 1	DWG NO		CHECKED BY	Mo	DATE	2020/05/16
	REV.	C1		SIZE	A4	CUSTOMER		APPROVED BY	Adley	DATE	2020/05/16

THIS INFORMATION IS CONFIDENTIAL AND IS DISCLOSED TO YOU ON CONDITION THAT NO FURTHER DISCLOSURE IS MADE BY YOU TO OTHER THAN CHOGORI PERSONNEL WITHOUT AUTHORIZATION FROM CHOGORI CORP.