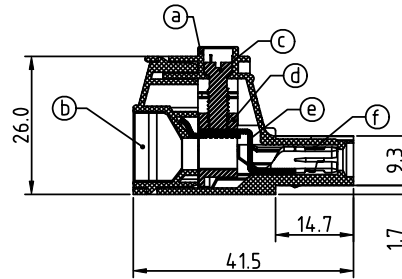
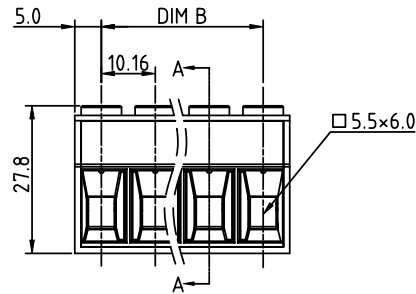
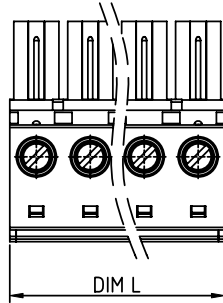


PRODUCT NUMBER	PITCH
EVxx61x000JOG	10.16mm



SECTION A-A

Material

- Item@ Terminal body: Thermoplastic (UL94V-0)
- ItemⓅ Terminal cover: Thermoplastic (UL94V-0)
- ItemⓄ Terminal screw :Steel Cr3+ Zinc plating "-" slot type
- ItemⓄ Clamp: Brass, Ni plated
- ItemⓄ Femal contact pin: Copper Tin plated
- ItemⓄ Wire guard :Stainless Steel

Electrical cULus / IEC

- Voltage rating: 300VAC / 1000VAC
- Current rating: 55A / 76A
- Solid wire (AWG): 6-20 / 0.5-16mm²
- Stranded wire (AWG): 6-20 / 0.5-16mm²
- Torque: 10.4 Lb-In / 1.2 N.m
- Screw: M4.5
- Wire strip length: 13-14mm
- Withstanding Voltage: 1.6KV / 8KV
- Operating temperature: -40°C to +115°C
- Safety Approval: cULus

PART NO.: EV xx 61 x 0 00J0 G

		Color	RoHS compliant
Solid block	0	Black (RAL9005)	(lead<4%)
No. of poles	2	Red (RAL3001/D)	In copper Alloy
02 2 poles	3	Orange(RAL2011/P)	
03 3 poles	4	Yellow(RAL1018/A)	
...	5	Green(RAL6018/T)	
12 12 poles	6	Blue (RAL5015/A)	
	8	Grey(RAL7035/D)	
	9	White(RAL1102)	
	C	Green(RAL6018/U)	

DIMENSION

Dim L	(N-1)×10.16+10.0
Dim B	(N-1)×10.16

N=Number of poles

Poles	Tolerance
2p-6p	±0.20
7p-12p	±0.30

mat'l. code		surface ASME Y14.5	tolerance ASME Y14.5	projection	product family TERMINAL BLOCK
ltr	ecn no	dr	date	tolerances unless otherwise specified	title TERMINAL BLOCK
				angles	PLUGGABLE PLUG, WITHOUT FLANGE
				X±0.5	scale
				X.X±0.3	FCI
				X*±1"	dwg no EVxx61x000JOG
		dr	EVIN ZHONG	041814	sheet 1 of 1
		enr	EVIN ZHONG	041814	size A4
		chr	HANKE FENG	041814	type CUSTOMER Drawing
		appd	SHI JUN	041814	
sheet index	revision sheet	A	1		